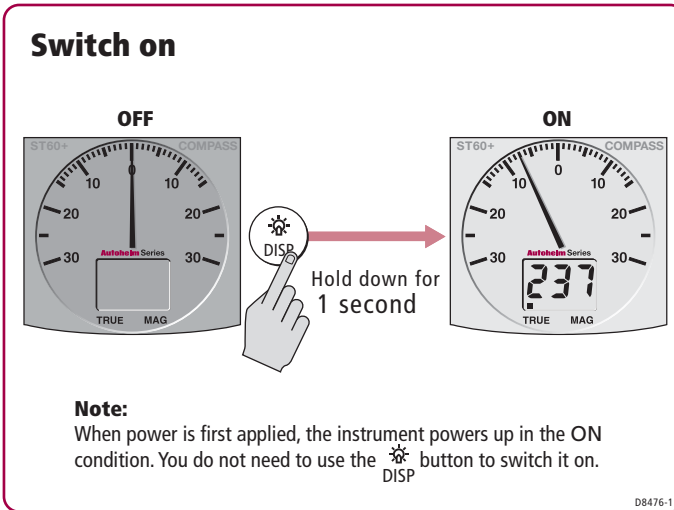
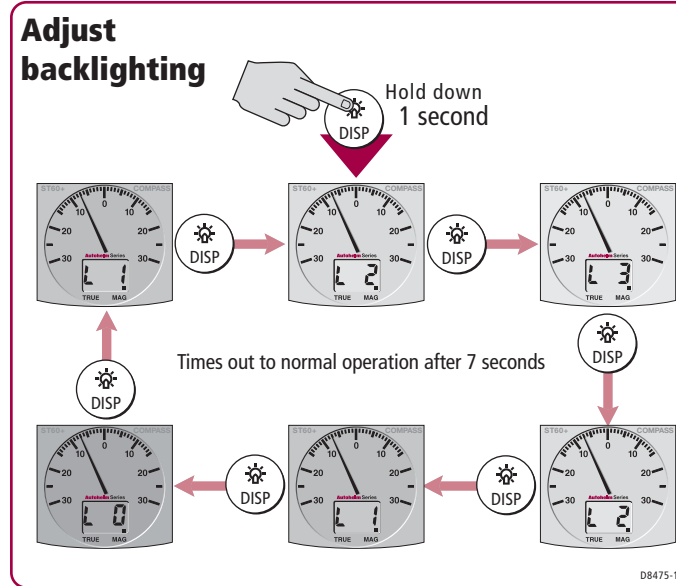
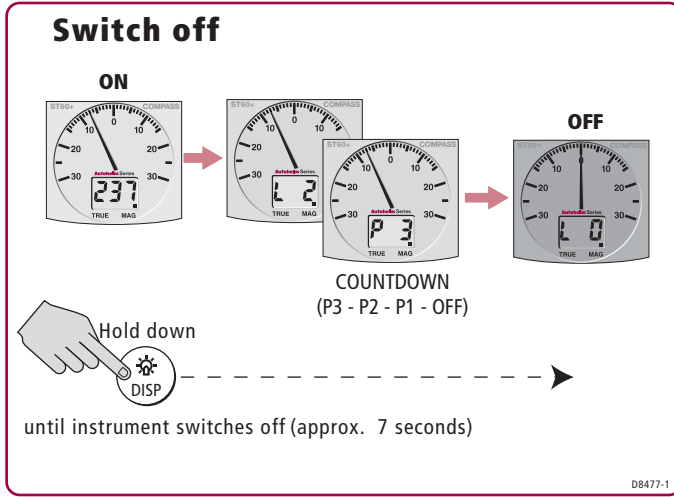


Switch off & on

Adjust backlighting

Raymarine®

ST60+ Compass Instrument



Quick Start Guide

Raymarine®

Raymarine Ltd, Quay Point, Northarbour Road, Portsmouth, Hampshire PO6 3TD, UK +44 (0) 23 9269 3611

Raymarine, Inc, 21 Manchester Street, Merrimack, NH 03054, USA

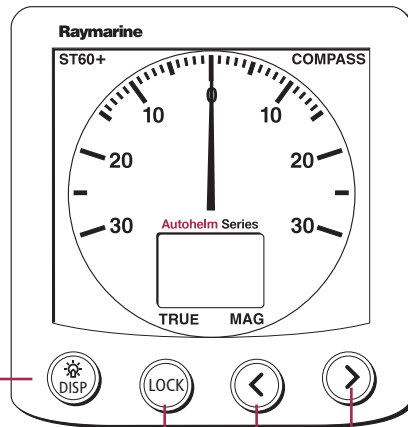
Toll Free: 800-539-5539

+1 603-881-5200

Document number: 86119-1

Date: December 2005

General Operation



DISP

Selects heading & course information, in UNLOCKED mode. Also gives access to backlight adjust and power on/off modes (see overleaf).

LOCK

Enter/leave lock mode



Decreases locked heading value, in LOCKED mode.



Increases locked heading value, in LOCKED mode.

Switch on
Unlocked mode



Current heading
237
TRUE MAG

Course Over Ground (COG)*
223
TRUE MAG

Average heading*
233
TRUE MAG



237
LOCK

Locked heading flashes for 5 seconds

Locked mode

Pointer shows difference between locked heading & actual course steered



Locked heading

237
LOCK

236
LOCK

235
LOCK

234
LOCK

238
LOCK

239
LOCK

240
LOCK

-3
LOCK

Average course error flashes for 5 seconds